



## Data Center Power Conversion & Distribution

### Description

Power Innovations International (Pii) brings decades of power conversion heritage to the industry. As AI applications grow at an unprecedented rate, infrastructure must be both flexible and robust, and Pii's AC/DC and DC/AC solutions are designed to support these high-demand workloads while maintaining efficiency from the core of the data center to the Edge of the grid.

Pii's family of power conversion modules includes AC to DC rectifiers and DC to AC inverters that provide the backbone for modern rack architectures. By utilizing a universal footprint, Pii allows operators to handle diverse conversion needs—whether 19" MGX or 21" ORV3—within the same simple, reliable topology.

### Key Features and Advantages

- Designed for MGX 19" racks, with simple adapter kits available for ORV3 21" racks
- Modules are parallelable within power shelves to scale with your power demands
- Integrated power management controllers
- Supports typical 48-54 V server loads, as well as downstream 240 Vac single phase input loads



PF-2662-P2xN



PF-1103-P25N

## Power Shelf Specifications

Electrical	PF-2662-P2xN	PF-1103-P25N
Input Voltage	51V nominal <b>Range:</b> 44 Vdc to 60 Vdc operating	190 Vac to 305 Vac and 300 Vac to 440 Vdc for each phase to return
Input Current	170 A Max	16 A per pin within input connector
Output Power	6600 VA total power output (3.3 kVA for each inverter) 0.5 to 1.0 power factor	10 kW
Output Voltage	240 Vac single phase	51 Vdc nominal <b>Range:</b> 42 Vdc to 64 Vdc, adjustable
Output Current	28 A per shelf 14 A per inverter	174 A maximum
Frequency	50 Hz or 60 Hz	N/A
Mechanical		
Dimensions (W x H x D)	19.49" x 1.67" x 33.07" (495 mm x 42.45 mm x 839.9 mm)	
Cooling	Forced air cooling, front to back airflow*	
Weight	34 lbs (15.4 kg) without modules or shelf controller	
General		
Safety Standards	IEC 62368-1 with CB Test Scheme	Conforms to IEC 62368-1; CE marking

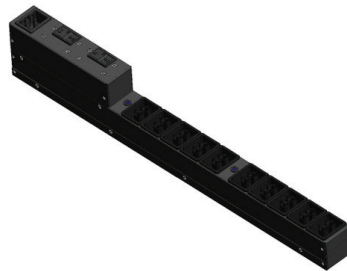
## PDU's

Designed for high-density IT environments, Pii's Basic Rack Power Distribution Units (PDUs) provide reliable power distribution from a single input source to multiple pieces of equipment. Engineered to fit standard server racks, these units are available in both horizontal (1U) and vertical (0U) form factors to maximize internal cabinet space. With a focus on rugged durability and "plug-and-play" simplicity, basic PDUs eliminate the complexity of software interfaces or network configurations. They offer a cost-effective solution for mission-critical hardware, ensuring consistent power delivery and streamlined cable management for servers, storage, and networking gear.

Pii's rack level PDUs deliver power to an entire rack through a side car configuration, supporting massive power capabilities up to 300 kW. Built to feed downstream power shelves with precision and safety, these PDUs feature integrated, current-limiting overcurrent protection devices. For advanced infrastructure management, they also include options for control signaling to facilitate comprehensive load monitoring and system integration.



RU-2030-xxxN



RU-2035-xxxN



4PDU-3PY

Document No.: GUIDE109  
Last Updated: February 13, 2026

Power Innovations International  
1305 South 630 East  
American Fork, UT 84003  
United States  
[www.PowerInnovations.com](http://www.PowerInnovations.com)

