

EVBC6060-xxxS

60 kW Bi-Directional DC EV Charger

Description

The EVBC6060-xxxS is an all-in-one DC quick charger that enables up to 60kW of bi-directional charging input and output. This product also offers highly flexible and field configurable Vac input power, which allows accepting the most common distribution voltages, thus reducing overall infrastructure and construction costs.

This charger can also be configured to provide different charging and discharging power, totaling up to 120kW of power in and out. For example, this system could be configured to charge at 40kW and discharge at 80kW, or other configurations that totals 120kW, providing ultimate bi-directional flexibility to meet use case requirements.

Features and Benefits

- Highly flexible power input with no de-rating
- Bi-directional, vehicle-to-grid (V2G) charging
- Field replaceable power rectifiers and inverters
- Demonstrated >1 million hour MTBF PSU topology
- IP54/NEMA 3R enclosure
- Remote upgrades via over-the-air updates

Applications

- Residential & multi-unit dwellings
- EV infrastructure and service providers
- Retail & hospitality
- OEM test facilities
- Public & commercial buildings
- Municipalities
- Small, mid, and large fleets & depots



Cabinet model without cable management

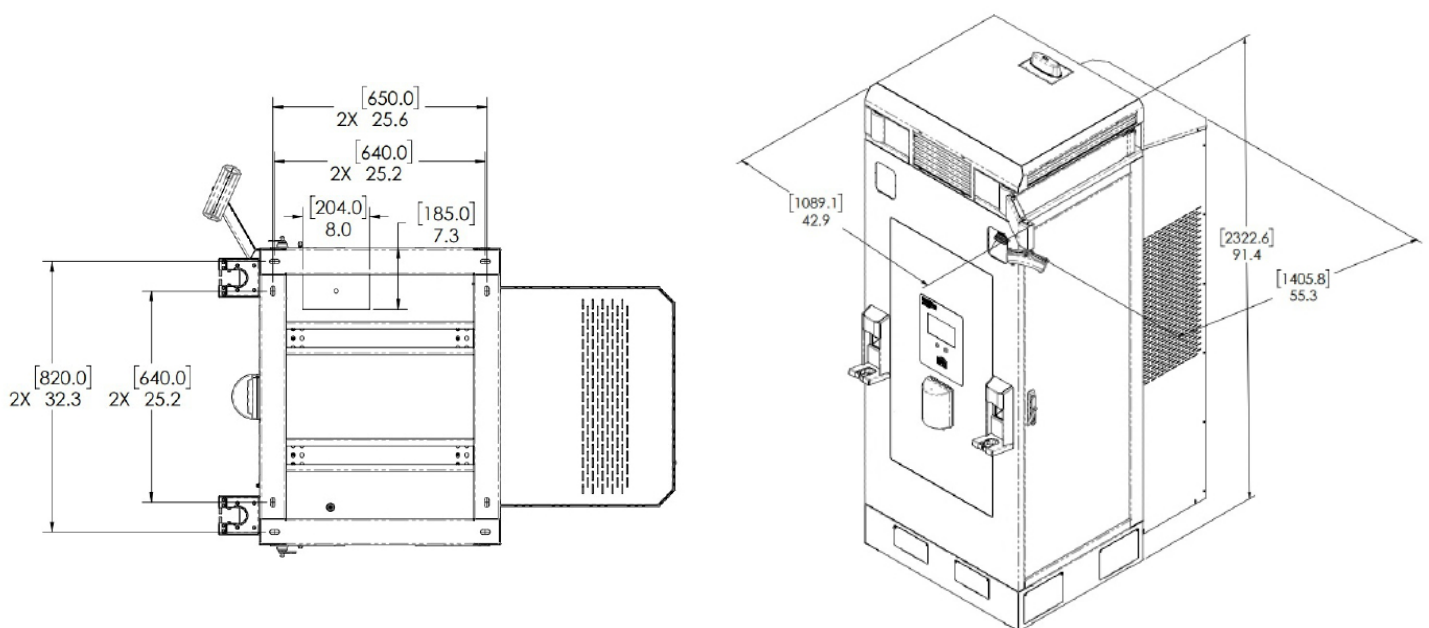


Cabinet model with cable management

Specifications

Rated Power	Standard Configuration: 60 kW Charging & discharging Alternate Configurations: 70/50 kW & 80/40 kW
AC Grid Voltage	208 or 240 Vac 3-Phase (3P + PE) Delta 480/277 Vac 3-Phase (3P + N + PE) Wye
AC Current	195 A maximum (208 or 240 Vac 3-phase Delta) 85 A maximum (480Vac 3-phase Wye)
Grid Frequency	60 Hz
Grid Isolation	Galvanic, integrated
DC Operating Voltage Range	250 to 450 Vdc, or 520 to 920 Vdc
DC Current	150 A maximum
Maximum Efficiency	96%
Power Factor	0.98
Connector & Cable	CCS1, 5m cable length
Charging/Data Protocols	DIN 70121 & OCPP 1.6J; (ISO15118-20 & OCPP 2.0.1 roadmap)
Network Interface	Cellular 4G LTE, Wi-Fi
Operational Temperature	-35 °C to +50 °C
Relative Humidity	Up to 95% non-condensing
Altitude	2000 m (6562 ft)
Enclosure Rating	NEMA 3R; IP54
Weight	700 kg
Mounting	Floor mounted, all-in-one cabinet
Certifications	Designed to UL2202, IEEE 1547.1 and UL1741-SB

Product Dimensions [in], mm



Document No.: DATA133
Last Updated: June 5, 2025
Supersedes: May 5, 2025

Power Innovations International
 1305 South 630 East
 American Fork, UT 84003
 United States
www.PowerInnovations.com

Pii **POWER**
INNOVATIONS
INTERNATIONAL

LITEON GROUP